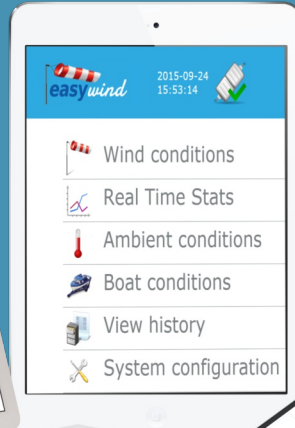
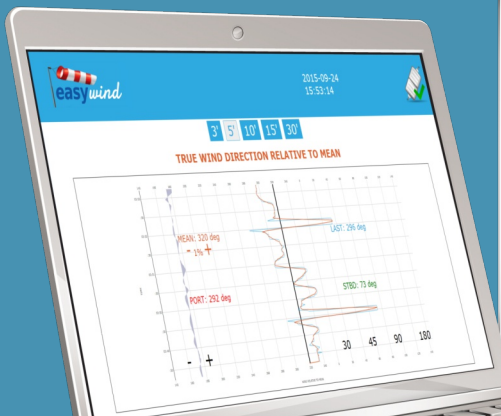




# Wind information for coaches



- ✓ Complement your job to make it more professional
- ✓ Wind strength and direction in a single window
- ✓ Real-Time wind stats, trends and data filtering
- ✓ Easy information to transmit to your sailors
- ✓ Access day information for debriefing
- ✓ True wind direction even when moving
- ✓ Use with Tablet/Mobile or Laptop
- ✓ No expertise needed



Data logging



Advanced visualization



Real-Time information



Reduced dimensions



Accurate measurements



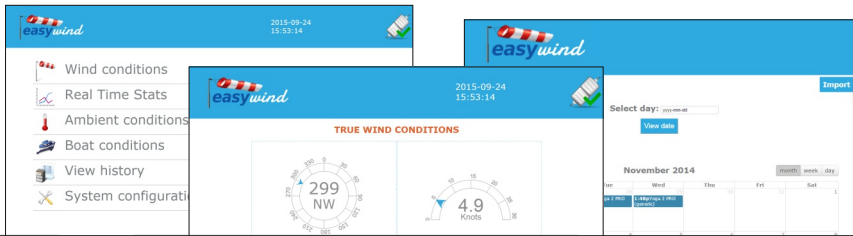
Easy installations



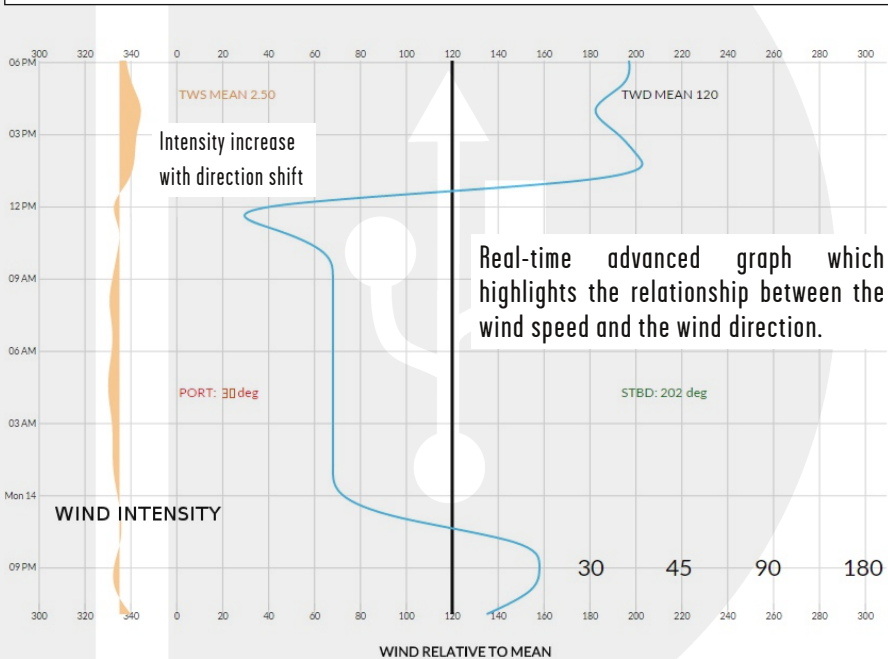
Exporting options



Easy to use



EasyWind's software has been designed to provide full information about wind speed and direction. It is designed for coaches, simplifying the information transferred to the sailors with an optimised usability for a boat environment.



EasyWind system includes software, weather station and cables to plug&play



- ✓ Tilt Sensors
- ✓ 10 Hz GPS.
- ✓ No moving parts
- ✓ Ultrasonic wind sensor
- ✓ Solid state compass
- ✓ Temperature and pressure

Currently supported models: Airmar WX150 / PB200 / WX200 / WX 220

# Contact us!

[www.oceandrivers.com/easywind](http://www.oceandrivers.com/easywind)

[info@oceandrivers.com](mailto:info@oceandrivers.com)



**Ocean Connection S.L.**

Calle Marineta 5B  
Arenal (Llucmajor)  
07600

**Mallorca Spain**

**VMG Electronics S.L.**

Marina Real Juan Carlos I,  
Muelle Nazaret — Base nº 1  
46024

**Valencia Spain**